



AÉROPORTS DE PARIS

The world is our guest

Press release

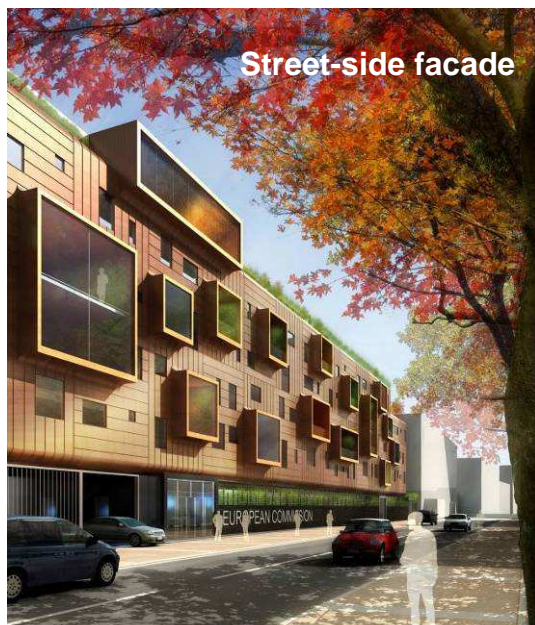
Paris, 17 December 2008

**ADPI, engineering and architecture subsidiary of Aéroports de Paris,
will design the European Commission headquarters
in Tokyo (Japan)**

ADPI wins a new design contract in Japan for "**Europa House**", a real estate complex of about 10,000 m² which will house the future European Commission headquarters in Tokyo. This design is on behalf of Japanese builder Taisei, winner of the competition launched by the European Commission at the end of 2007. The real estate complex will be built on a piece of land acquired in the heart of Tokyo. Taisei is in charge of financing and building the European Commission headquarters and will then be in charge of its maintenance for 15 years. The role of ADPI is to carry out the design studies for Europa House, in collaboration with Taisei's design teams.

For **Pierre Graff**, Chief Executive Officer of Aéroports de Paris:

"It is a new major success for ADPI's teams in Japan. Last year, at the same period, ADPI won a design contract for the new French embassy in Japan. With this new contract, it is all ADPI's expertise for prestige and diversification projects - besides their airport-related skills - which is recognized."



The Europa House comprises the reception halls, European Commission offices as well as staff apartments.

The strong point of ADPI's approach was to divide the program into two parallel buildings, linked by a suspended garden to make them dialogue with one another. It was also to have set the apartments in the foreground, street-side to benefit from the sunshine and the views over Tokyo and hence to have completely reversed the setting order of the program parts by taking maximum advantage of the site.

◀ Street side, the facade of Europa House aims at expressing the common base of Europe as well as the strength of its diversity through, notably, a different size for each of the loggias extending from the apartments.

www.aeroportsdeparis.fr

Press contact: Jérôme Dutrieux - +33 1 43 35 70 70 – Analysts / Investors Relations: Charlotte GUYOT- +33 1 43 35 70 58

Aéroports de Paris builds, develops and manages airports including Paris-Charles de Gaulle, Paris-Orly and Paris-Le Bourget. Aéroports de Paris is Europe's second-largest airport services group in terms of airport revenues and the European leader for cargo and mail. Aéroports de Paris accommodates nearly 460 airlines, including the main companies in the air transport industry. With an exceptional geographic location and a major trading area, the Group is pursuing its strategy of modernizing its terminal facilities and upgrading the quality of services, and also intends to develop its retail and real estate business. In 2007, Aéroports de Paris Group had revenues of €2,292.4 million and handled 86.4 million passengers.



AÉROPORTS DE PARIS

The world is our guest

Press release



To express both European unity and diversity, the same materials will be used for both buildings skins but with a different copper patina finish: ochre for the accommodation building, green for the office building.

◀ Office-side facade

The complex was awarded one of the highest CASBEE rankings (Comprehensive Assessment System for Building Environmental Efficiency) thanks to its big environmental ambition with, notably:

- strong presence of vegetation with indoor and outdoor gardens, vegetal walls,
- water management through rainwater collection and treatment,
- installation of solar panels on the roof,
- energy-saving quest (thermal insulation and energy management).

With their concept for Europa House, ADPI's teams have contributed to the success of Taisei's offer for a prestigious project thanks to their capacity to comprehend the needs expressed by the European Commission as well as the architectural, functional and technical quality of their response.

Project team :

Management de Projet: ADPI Architects and Engineers

- *Jean-Yves Coulot : Project manager*

Architecture: ADPI Architects and Engineers.

- *Dominique Chavanne - Architect Director, with M. Miranda, Nicolas Moulin and J. Guillard – Architectes*

BET

- *Taisei Design Division*

ADPI, established in 2000, is a subsidiary of the Aéroports de Paris Group. It provides design, architecture and engineering services as well as project management support. Patrice Hardel is ADPI's Chairman of the Board and Alain Le Pajolec is ADPI's CEO.

www.aeroportsdeparis.fr

Press contact: Jérôme Dutrieux - +33 1 43 35 70 70 – Analysts / Investors Relations: Charlotte GUYOT- +33 1 43 35 70 58

Aéroports de Paris builds, develops and manages airports including Paris-Charles de Gaulle, Paris-Orly and Paris-Le Bourget. Aéroports de Paris is Europe's second-largest airport services group in terms of airport revenues and the European leader for cargo and mail. Aéroports de Paris accommodates nearly 460 airlines, including the main companies in the air transport industry. With an exceptional geographic location and a major trading area, the Group is pursuing its strategy of modernizing its terminal facilities and upgrading the quality of services, and also intends to develop its retail and real estate business. In 2007, Aéroports de Paris Group had revenues of €2,292.4 million and handled 86.4 million passengers.