

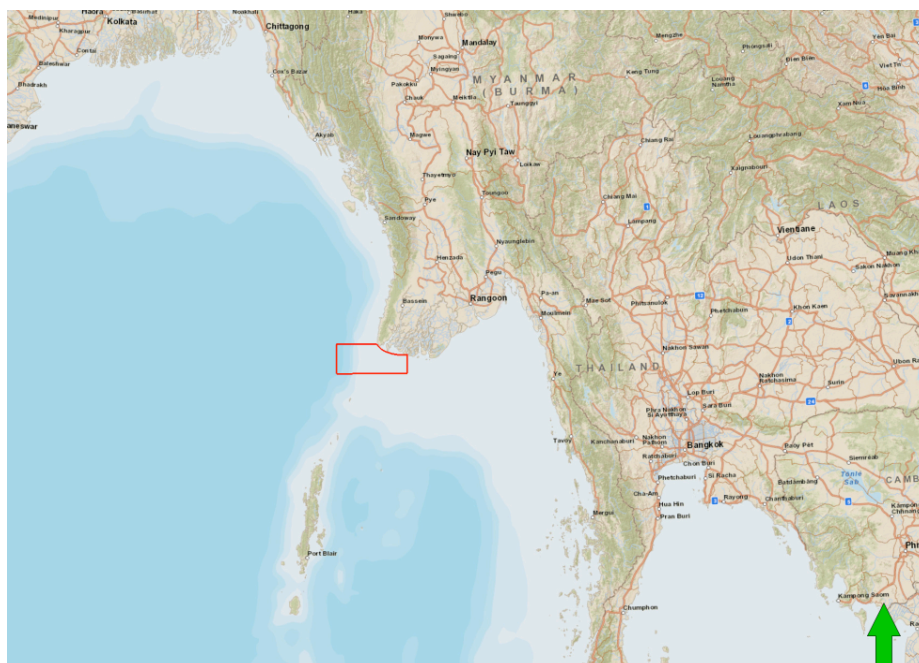
Paris, 4 June 2013
No 12-13

Signature of a Farm-out Agreement with PetroVietnam Exploration Production Corporation Ltd. on Block M2, Moattama Offshore Area in Union of Myanmar.



MP EAST ASIA (2/3 MPN and 1/3 Maurel & Prom) has signed a Farm out Agreement with PETROVIETNAM EXPLORATION PRODUCTION CORPORATION LTD. over Block M2, Mottana Offshore Area - offshore the Union of Myanmar.

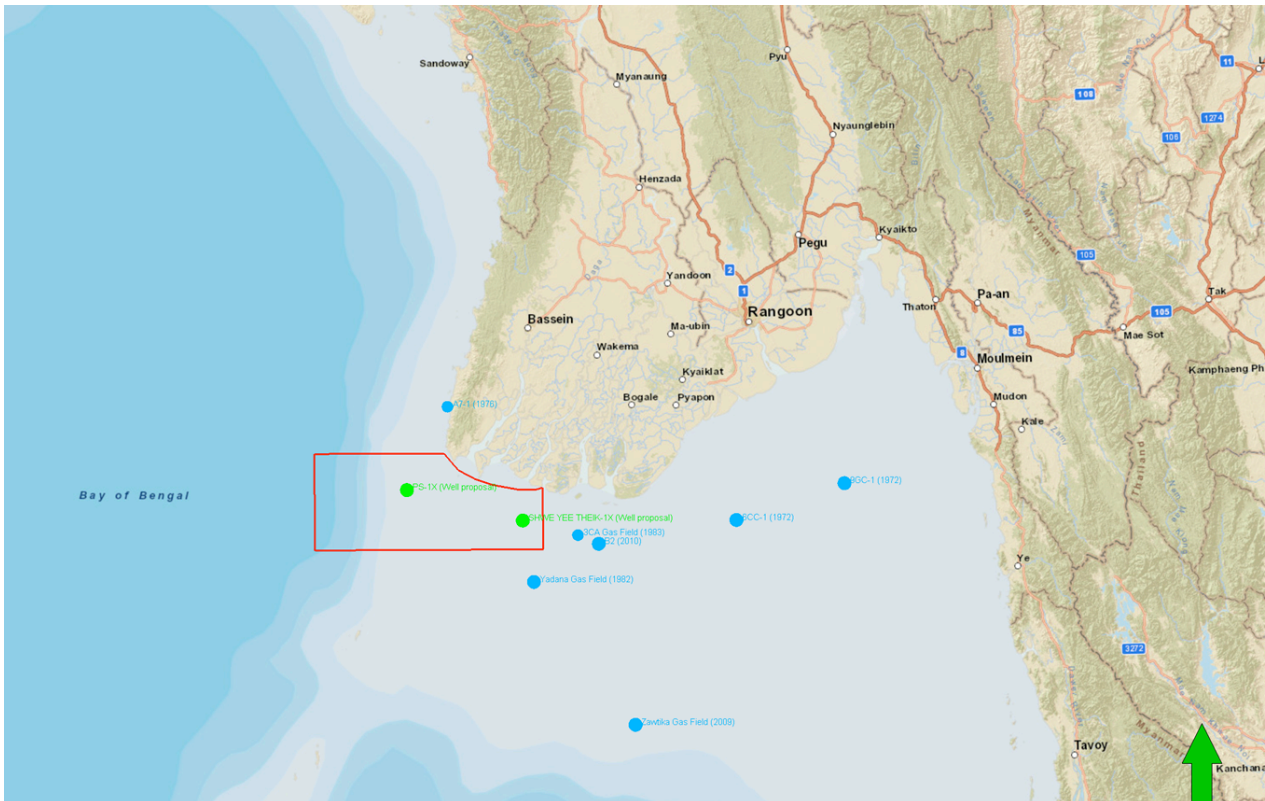
This license is located in the Western part of the Gulf of Martaban and covers an area 9,652 km2 (see map), around 200 km South West from Rangoon. The water depth in Bock M2 is below 200m. It is close to Block A7 to the north, Block M3 to the east where gas has been discovered and is ready to be brought on stream and Block M5 to the south where the 5TCF Yadana gas field was found. Under the agreement, PVEP agreed to assign part of its Participating Interest of the Contract Area to MP EAST ASIA.



Completion of the farm-out is subject to the Government of Myanmar and joint venture partner approval as well as joint operating agreement amendment.

After the assignment is completed, the Participating Interest of Block M2 joint venture will be as follows:

PVEP	45%
MP EAST ASIA	40%
Eden Group Company Limited	15%



- Prospect to be drilled
- Gas discoveries

MP EAST ASIA also wishes to strengthen its relation with PVEP and as a result of this farm in opportunity, MP EAST ASIA and PVEP will enter into a cooperation agreement for the purpose of exchanging information and jointly developing E&P new ventures in Vietnam and worldwide where all parties have available or future projects.

This project is the first of several joint ventures planned between Maurel & Prom and MPN, in which the former holds 1/3 and the latter holds 2/3.

Plus d'informations : www.maureletprom.fr

Communication :

INFLUENCES

☎ : 01 42 72 46 76

✉ : communication@agence-influences.fr

Ce document peut contenir des prévisions concernant la situation financière, les résultats, les activités et la stratégie industrielle de Maurel & Prom. Par leur nature même, les prévisions comportent des risques et des incertitudes dans la mesure où elles se fondent sur des événements ou des circonstances dont la réalisation future n'est pas certaine. Ces prévisions sont effectuées sur la base d'hypothèses que nous considérons comme raisonnables mais qui pourraient néanmoins s'avérer inexactes et qui sont tributaires de certains facteurs de risques tels que les variations du cours du brut ; les variations des taux de change ; les incertitudes liées à l'évaluation de nos réserves de pétrole ; les taux effectifs de production de pétrole ainsi que les coûts associés ; les problèmes opérationnels ; la stabilité politique ; les réformes législatives et réglementaires ou encore les guerres, actes de terrorisme ou sabotages.

Maurel & Prom est coté sur Euronext Paris – compartiment A – CAC® mid 60 - SBF120® - CAC® Mid & Small - CAC® All-Tradable - CAC® All-Share



Isin **FR0000051070** / Bloomberg **MAU.FP** / Reuters **MAUP.PA**