

# VINCI CONSTRUCTION

## WILL WORK ON THE LINE 14 SOUTH OF THE FUTURE GRAND PARIS EXPRESS RAPID TRANSIT SYSTEM

Consortium led by  
**VINCI**  
**Construction,**  
together with  
Spie batignolles



**€400m**  
contract value almost



**250**  
**people**  
working on  
the project



**Innovative  
social  
integration  
programme**

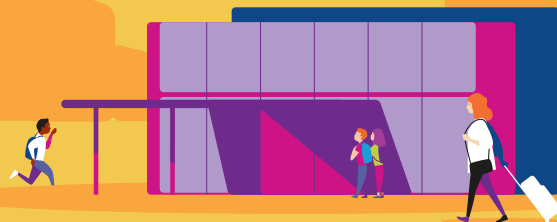
(ViE entity,  
"Chantiers et Territoires  
Solidaires" endowment fund)

Excavation  
of a **4.6 km**  
**tunnel**

A large-scale project  
**in an urban  
environment**



Construction of the new  
**Kremlin Bicêtre  
Hôpital station**  
and five shafts

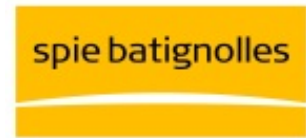


### Goal



**Extend  
the Line 14 to the south**

to create a fast link  
between Paris and Orly Airport



Paris, 20 February 2018

## Press release

### **Consortium led by VINCI Construction, together with Spie batignolles, wins a new contract on the metro Line 14 South as part of the future Grand Paris Express rapid transit system**

- **4.6 km of tunnel to be excavated using a tunnel boring machine**
- **Construction of the new Kremlin Bicêtre Hôpital station**
- **Contract value: almost €400 million (excluding tax)**

The consortium led by VINCI Construction (Dodin Campenon Bernard, lead company; VINCI Construction France; VINCI Construction Grands Projets and Botte Fondations), together with Spie batignolles (Spie batignolles Génie Civil and Spie batignolles Fondations), has been awarded a major contract as part of the Grand Paris Express programme. The RATP<sup>1</sup> has selected this consortium to execute works package GC02 of the future Line 14 South between Olympiades (in the 13<sup>th</sup> arrondissement of Paris) and Orly Airport.

The contract, worth almost €400 million (excluding tax), requires the use of an earth pressure balance tunnel boring machine to excavate a 4.6 km tunnel between Maison Blanche Paris XIII futur station and the TBM starting shaft at Jean Prouvé. It also includes construction of the new Kremlin Bicêtre Hôpital station and five ventilation and emergency shafts. The contract is scheduled to last 72 months.

#### **A large-scale project in an urban environment**

The GC02 works package site cuts through Paris, Kremlin Bicêtre, Gentilly, Villejuif and L'Haÿ-les-Roses. It also passes near Kremlin Bicêtre Hospital and the A6 motorway. Integrating the worksite into this environment is a major challenge that has led to numerous consultation meetings being held between the RATP, the Société du Grand Paris (SGP) and all the cities, local authorities and residents involved.

#### **Innovative and ambitious social integration programme**

This package's works will create almost 250 jobs. Significant measures are planned for the integration of around 50 long-term unemployed people, with some 83,000 hours of training and support to be provided over the course of the project. In 2011, VINCI set up ViE (VINCI insertion Emploi), an entity specialising in social and professional integration, to help Group companies with this aspect of their contracts.

In addition, the "Chantiers et Territoires Solidaires" endowment fund created by VINCI will support public interest projects implemented in the vicinity of the worksites.

Spie batignolles is also strongly committed to facilitating the social and professional integration of marginalised people, notably through its Fondation Spie batignolles.

---

<sup>1</sup> Programme management of the extension of Line 14 to the south has been temporarily transferred to the RATP (excluding the Villejuif Institut G. Roussy and Orly Airport stations, for which the programme managers are Société du Grand Paris and Paris Aéroport respectively).

## **Line 14 South, the link with Orly Airport**

A missing link between central Paris and Orly Airport, the Line 14 South will be used by more than 260,000 residents of Paris and the Val de Marne and Essonne départements. It will provide connections with metro Line 7, Line C of the Paris RER regional express system, Line 7 of the tram system and Lines 15 South and 18 of the Grand Paris Express rapid transit system. It will create a fast link between Paris and Orly Airport, which is essential for 2024 when the city will host the Olympic Games.

## **VINCI Construction and Spie batignolles, two players already working on major metro projects**

VINCI Construction and Spie batignolles are participating in the extension of Lines 4, 12, and 14 of the Paris metro, which is managed by the RATP.

In addition, VINCI Construction and Spie batignolles, in a consortium, have won works packages T3C (€926 million) and T2D (€156 million) for Line 15 South of the Grand Paris Express programme, which is managed by the SGP.

### **Consortium:**

VINCI Construction:

- Dodin Campenon Bernard (consortium leader)
- VINCI Construction Grands Projets
- VINCI Construction France
- Botte Fondations

Spie batignolles:

- Spie batignolles génie civil
- Spie batignolles fondations

### **Programme management: RATP**

**Project management: ELIOS** consortium comprising Setec TPI (leader), Systra, Groupe 6, Jean Paul Viguier et Associés, Franklin Azzi Architecture, Brunet Saunier Architecture and Valode & Pistre

#### **About VINCI**

VINCI is a global player in concessions and contracting, employing close to 195,000 people in some 100 countries. We design, finance, build and operate infrastructure and facilities that help improve daily life and mobility for all. Because we believe in all-round performance, above and beyond economic and financial results, we are committed to operating in an environmentally and socially responsible manner. And because our projects are in the public interest, we consider that reaching out to all our stakeholders and engaging in dialogue with them is essential in the conduct of our business activities. VINCI's goal is to build long-term value in this way for its customers, shareholders, employees and partners, and for society at large.

[www.vinci.com](http://www.vinci.com)

#### **About Spie batignolles**

Spie batignolles, a large French construction and services group, is a major player in building and civil engineering with 6,500 employees. It operates in six main areas of expertise: construction, civil engineering and foundations, energy, public works, property, and concessions. The group leads major construction projects and also carries out local repair and maintenance work through its network of dedicated offices in France. Spie batignolles has positioned itself as a leader in customer relations in its markets and is developing a unique portfolio of construction products and services. The group has the resources needed to manage its growth independently: since September 2003, Spie batignolles is majority controlled by its senior executives and managers as shareholders, along with Ardian and Tikehau / Salvepar.

[www.spiebatignolles.fr](http://www.spiebatignolles.fr)

#### **PRESS CONTACTS**

##### **VINCI**

VINCI Press department

Tel.: + 33 (0)1 47 16 31 82

[media.relations@vinci.com](mailto:media.relations@vinci.com)

##### **Spie batignolles**

Audrey Segura

Tel.: +33 (0)1 30 09 67 04

[audrey@fpa.fr](mailto:audrey@fpa.fr)