

# Kerlink & SmartMakers join efforts to deliver comprehensive real-time Asset Tracking and Monitoring Solution

Customized LoRaWAN® Networks and Battery-Powered IoT Sensors Transmit Data Over Long Distances and Deep Inside Buildings

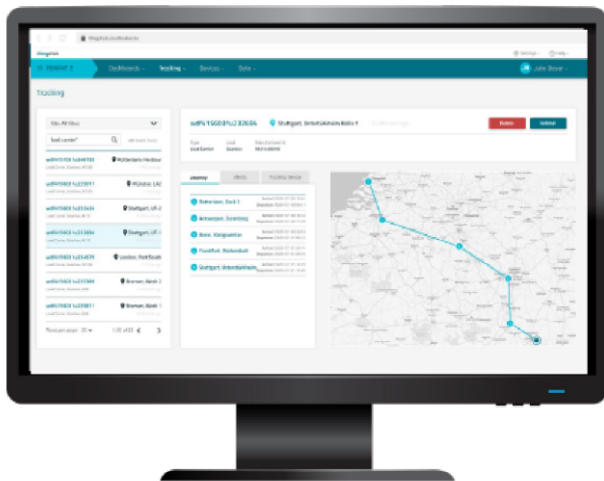


## SMARTMAKERS

### PRESS RELEASE

**Thorigné-Fouillard**, France and **Ettlingen**, Germany – Dec. 1, 2020, 8:30 a.m. CEST – **Kerlink** (AKLK – FR0013156007), a specialist in solutions dedicated to the Internet of Things (IoT), and **SmartMakers**, a leading provider of IoT solutions that help industrial companies to improve their business processes, announced today their LoRaWAN® geolocation asset-tracking system. It gives companies real-time location and status of their products and production systems. The solutions work indoor outdoor and in transit, which enables a great variety of application areas.

Combining Kerlink's [Wirnet™ iFemtoCell](#) LoRaWAN indoor gateway and its robust [Wirnet™ iStation](#) outdoor LoRaWAN gateway with SmartMakers' LoRaWAN-based GPS trackers and [thingsHub Platform](#), [IoT Asset Tracking](#) continuously monitors the location, condition and status of assets like load carriers, shipments, containers, tools and equipment.



The system generates real-time information, which simplifies the work of logistics managers and operational teams. In large industrial facilities, IoT Asset Tracking also wirelessly provides energy data from equipment and pump and motor states, and monitors condition values and levels. In these customized LoRaWAN networks, battery powered IoT sensors transmit these values for several years over long distances and deep inside buildings, freeing company personnel from time-consuming status checks, and allowing automated processes which previously were impossible. The data generated in this way forms the basis for future changes in value and enables the operating team to generate a forecast from the retrospective for more delivery performance and competitiveness.

Security and scalability of the LoRaWAN technology are provided by [Kerlink's Wanesy™ Management Center](#), a carrier-grade LoRaWAN Network Server and network management layer that ensures reliable implementation and operation of private IoT networks with fewer gateways, as well as nationwide rollouts with hundreds of gateways.

Business processes and entire supply chains can be improved by fast applicable IoT solution implementation and the thingsHub [IoT Asset Tracking](#), which allows scaling up from a local site to a global rollout.

The system can eliminate costs of manual inventory checking or barcode scanning and reduce delays in work processes due to missing parts or equipment by up to 80 percent. It also enables companies to increase utilization of logistical assets and equipment by up to 30 percent.

# Kerlink & SmartMakers join efforts to deliver comprehensive real-time Asset Tracking and Monitoring Solution

*Customized LoRaWAN® Networks and Battery-Powered IoT Sensors Transmit Data Over Long Distances and Deep Inside Buildings*

"IoT Asset Tracking, which is designed for both internal and external supply-chain processes, combines SmartMakers and Kerlink IoT technology to update asset-tracking technologies," said SmartMakers CEO & co-founder, Sebastian Stute. "In addition to streamlining essential onsite business processes, at the order-fulfillment level it enables customers to know asset locations even between checkpoints and eliminates the need for personnel to update status through barcode scans and manual entries."

"Kerlink gateways and Wanesy™ Management Center provide a secure and future-proof solution to develop smart applications, such as IoT Asset Tracking," said Kerlink Account Manager, Etienne Ghidossi. "Our partnership with SmartMakers offers businesses of all sizes a state-of-the-art solution that boosts operational efficiency, improves customer service and accelerates their return on investment."

## About Kerlink

Kerlink Group is a leading global provider of connectivity solutions for designing, launching, and operating public & private Internet of Things networks. Its comprehensive product portfolio includes industrial-grade network equipment, best-of-breed network core, operations and management software, value-added applications, and expert professional services, backed by strong R&D capabilities. Kerlink specializes in providing future-proof, intelligent IoT connectivity for three major domains: **Smart Cities** – metering, parking, street lighting, waste management, air quality, building & facilities, asset monitoring... **Smart Industries** – fleet & asset tracking, energy & utilities, oil, gas & mining, airports, harbors, infrastructure, manufacturing, retail... and **Smart Territories** – precision agriculture, environment protection and rural towns & regions. Kerlink has deployed its hardware and software solutions in more than 120,000 installations with more than 330 clients in 69 countries. Based in France, with subsidiaries in the US, Singapore, India, and Japan, Kerlink is a founding and board member of the LoRa Alliance® and the uCIFI Alliance™. It is listed on Euronext Growth Paris under the symbol ALKLLK.

For more information, visit [www.kerlink.com/](http://www.kerlink.com/) or follow us on Twitter @kerlink\_news.

## About SmartMakers

SmartMakers, founded in 2016, is a leading provider of IoT solutions. The use of these solutions enables companies of all sizes to achieve an immediately measurable improvement in their business processes.

SmartMaker's Internet of Things ("IoT") solutions combine IoT sensor technology, IoT wireless networks and state-of-the-art software to make operating data visible in real-time. We know that cost effective and fast to integrate IoT technology such as LoRaWAN®, will lead to countless new possibilities to digitize processes and workflows where this was not possible before. SmartMakers supplies industrial companies of all sizes and from a wide range of industries. From manufacturing, automotive, transportation and logistics to facility management, utilities, and construction.

For more information visit <https://smartmakers.io/>

# Kerlink & SmartMakers join efforts to deliver comprehensive real-time Asset Tracking and Monitoring Solution

Customized LoRaWAN® Networks and Battery-Powered IoT Sensors  
Transmit Data Over Long Distances and Deep Inside Buildings



## Upcoming events

2020 full year revenue: 11 February 2021, after market close

[www.kerlink.com](http://www.kerlink.com)

## SMARTMAKERS

### SmartMakers contact:

Julia Bayer  
Sales and Distribution  
+49 721 909 90120  
[j.bayer@smartmakers.de](mailto:j.bayer@smartmakers.de)



### Financial press contact:

Actifin  
Isabelle Dray  
+33 (0) 1 56 88 11 29  
[idray@actifin.fr](mailto:idray@actifin.fr)



### Kerlink press & market analysts contact:

Mahoney Lyle  
Sarah-Lyle Dampoux  
+33 (0) 6 74 93 23 47  
[sldampoux@mahoneylyle.com](mailto:sldampoux@mahoneylyle.com)

### Investors contact:

Actifin  
Benjamin Lehari  
+33 (0) 1 56 88 11 25  
[blehari@actifin.fr](mailto:blehari@actifin.fr)



[www.kerlink.com](http://www.kerlink.com)



Kerlink



[@kerlink\\_news](https://twitter.com/kerlink_news)



Kerlink